

Texas Collaborative for Healthy Mothers & Babies



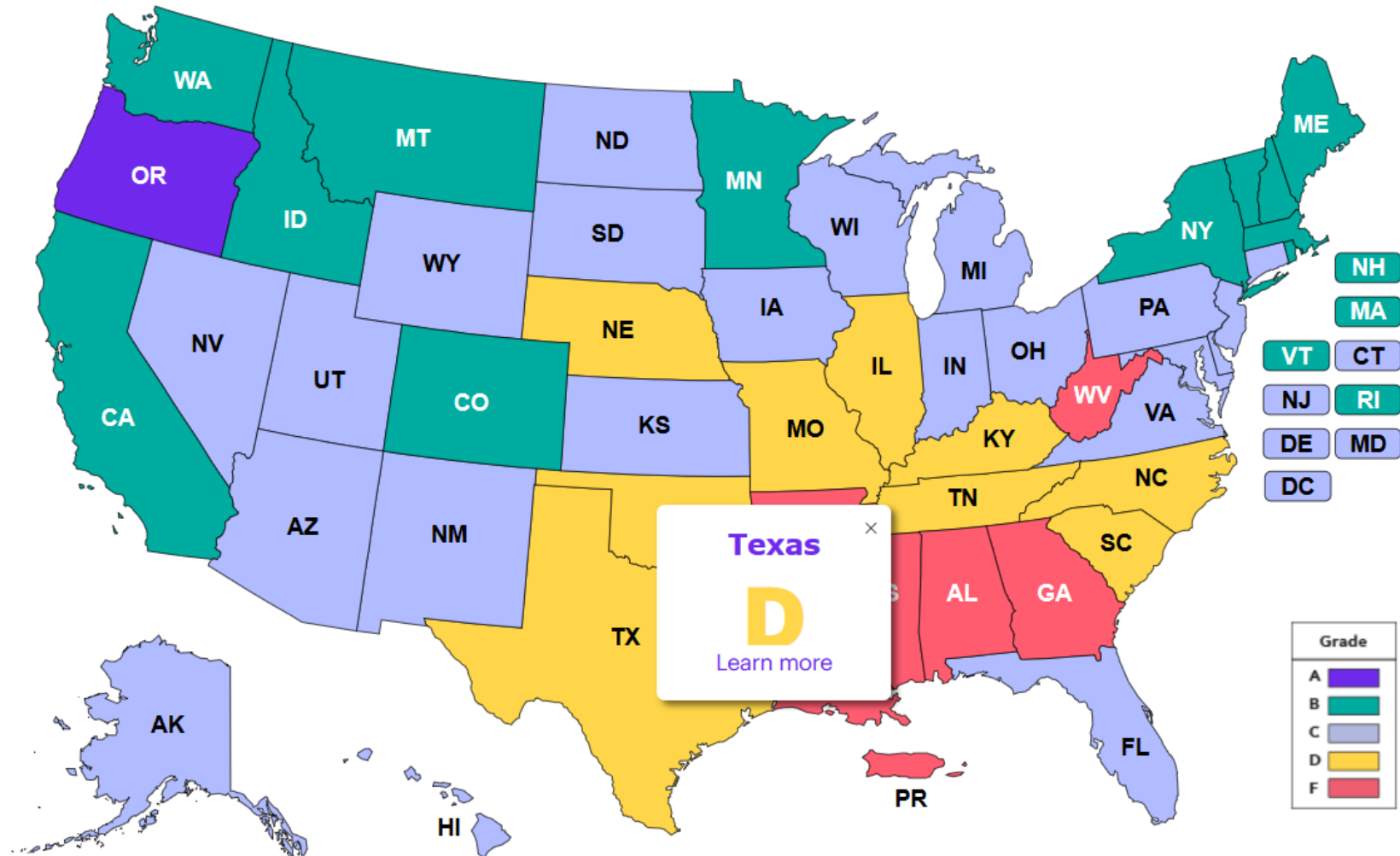
Michael Speer, MD
Chair, TCHMB

Professor of Pediatrics and Neonatology
Baylor College of Medicine
Medical Director, Mother-Baby Nursery Units
Texas Children's Hospital

February 27, 2020



2019 Premature Birth Report Cards



Source: Preterm birth rates are from the National Center for Health Statistics, 2018 final natality data. Grades assigned by March of Dimes Perinatal Data Center.

November 2013

TCHMB - Timeline

- HTB Expert Panel transitioned to become the Texas Collaborative for Healthy Mothers and Babies (TCHMB).
- TCHMB, coordinated and facilitated by DSHS, grew to approximately 150 members.

November 2015

- UT Health Science Center at Tyler, in partnership with UT System, began providing support to the TCHMB through a three year contract with DSHS.

November 2018

- Contract with DSHS, Title V & Maternal and Child Health, is renewed through fiscal year 2021



How is Texas Unique?

2ND

largest state in the U.S.



35% of population speaks language other than English at home



400,000 births annually



Has more counties (**254**) than any other state



10% of all births in the U.S.



Is both urban and rural: **95%** of population lives in less than half (108) of counties.



1 of 5 “minority-majority” states



Has **3 of the 10** biggest cities in the U.S., **5 of the top 20**



PQC Mission

To advance health care quality and patient safety for all Texas mothers and babies, through the collaboration of health and community stakeholders.



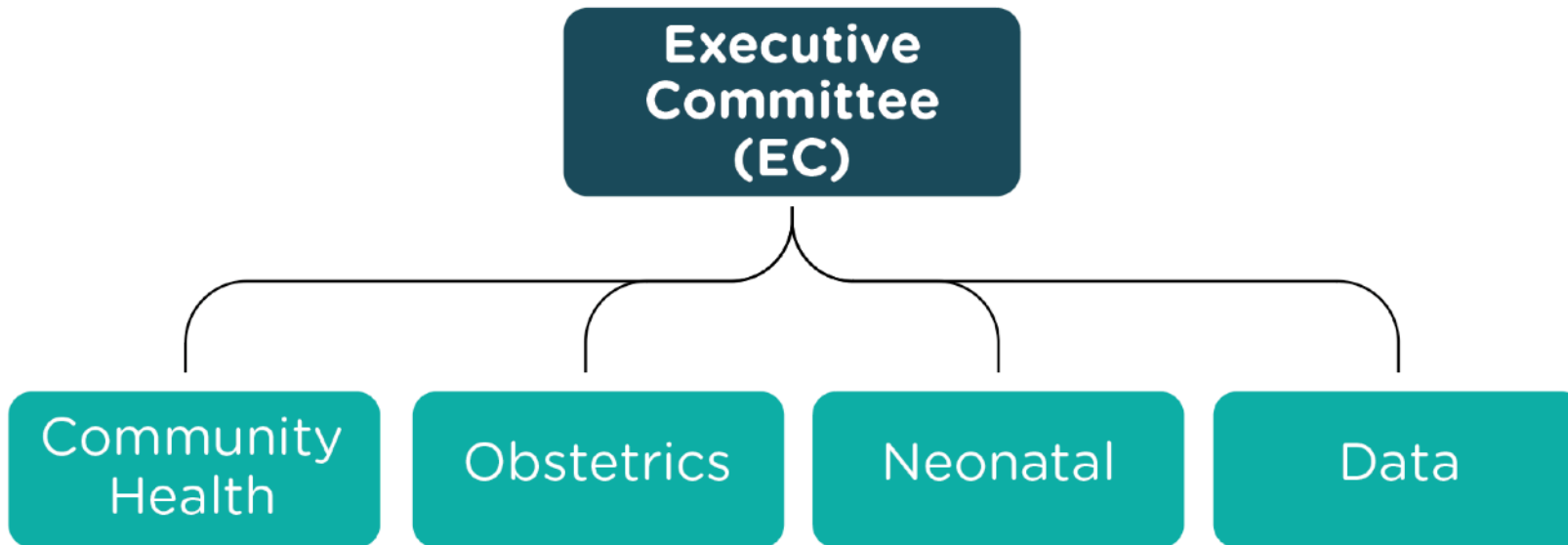
Partner Organizations:

Executive committee members span a broad range of multidisciplinary health professions, including obstetrics, maternal-fetal medicine, pediatrics, neonatology, nursing, and community health, and include members of the following

- Department of State Health Services (DSHS)
- Health and Human Services Commission (HHSC)
- Department of Family Protective Services (DFPS)
- March of Dimes (MoD)
- Facilitation Contractor (currently UT Health Science Center at Tyler in coordination with UT System)
- Texas Hospital Association (THA)
- Texas Medical Association (TMA)
- American College of Obstetricians and Gynecologists (ACOG) District XI
- Association of Women's Health, Obstetric and Neonatal Nurses (AWHONN)
- Texas Association of Community Centers (TACHC)
- Texas Pediatric Society (TPS)
- Perinatal Advisory Council (PAC)
- Perinatal Care Regions Alliance (PCR)
- Regional Advisory Committee (RAC)
- Texas Academy of Family Physicians (TAFP)



Leadership Structure



CHAIR
Michael Speer, MD

VICE CHAIR/CHAIR-ELECT
Patrick Ramsey, MD

PAST CHAIR
George Saade, MD

NEONATAL
SUBCOMMITTEE
CO-CHAIRS
Charleta Guillory, MD
Nancy Hurst, PhD
Rashmin Savani, MD
David Weisoly, DO

OBSTETRICS
SUBCOMMITTEE
CO-CHAIRS:
**Christina Davidson,
MD**
Jose Aun, MD
Catherine Eppes, MD
Elly Xenakis, MD

COMMUNITY HEALTH
SUBCOMMITTEE
CO-CHAIRS:
June Hanke, RN
Janet Jones, MPH

DATA CO-CHAIRS
Vacant

MARCH OF DIMES
**Heather Butscher,
LMSW**

TEXAS DEPARTMENT OF
STATE HEALTH SERVICES
Manda Hall, MD

TEXAS HEALTH AND
HUMAN SERVICES
Stephanie Stephens

DFPS
Sasha Rasco, MPAff

UT SYSTEM
David Lakey, MD

AT LARGE
Lynda Tyer-Viola, PhD
Moss Hampton, MD

AMERICAN COLLEGE
OF OBSTETRICIANS
AND GYNECOLOGISTS,
DISTRICT XI
**C. Tony Dunn, MD,
FACOG**

ASSOCIATION OF
WOMEN'S HEALTH,
OBSTETRIC AND
NEONATAL NURSES
Terrie Price, RNC-OB

PERINATAL ADVISORY
COUNCIL
TBD

PERINATAL CARE
REGIONS ALLIANCE
John Loyd, MD

REGIONAL ADVISORY
COMMITTEE
Eric Epley

TEXAS ACADEMY OF
FAMILY PHYSICIANS
Tom Banning

TEXAS ASSOCIATION OF
COMMUNITY OF HEALTH
CENTERS
Jose Camacho, JD

TEXAS MEDICAL
ASSOCIATION
**Emily Briggs, MD,
MPH**

TEXAS HOSPITAL
ASSOCIATION
Carrie Kroll

TEXAS PEDIATRIC
ASSOCIATION
Ben Raimer, MD

TCHMB Executive Committee

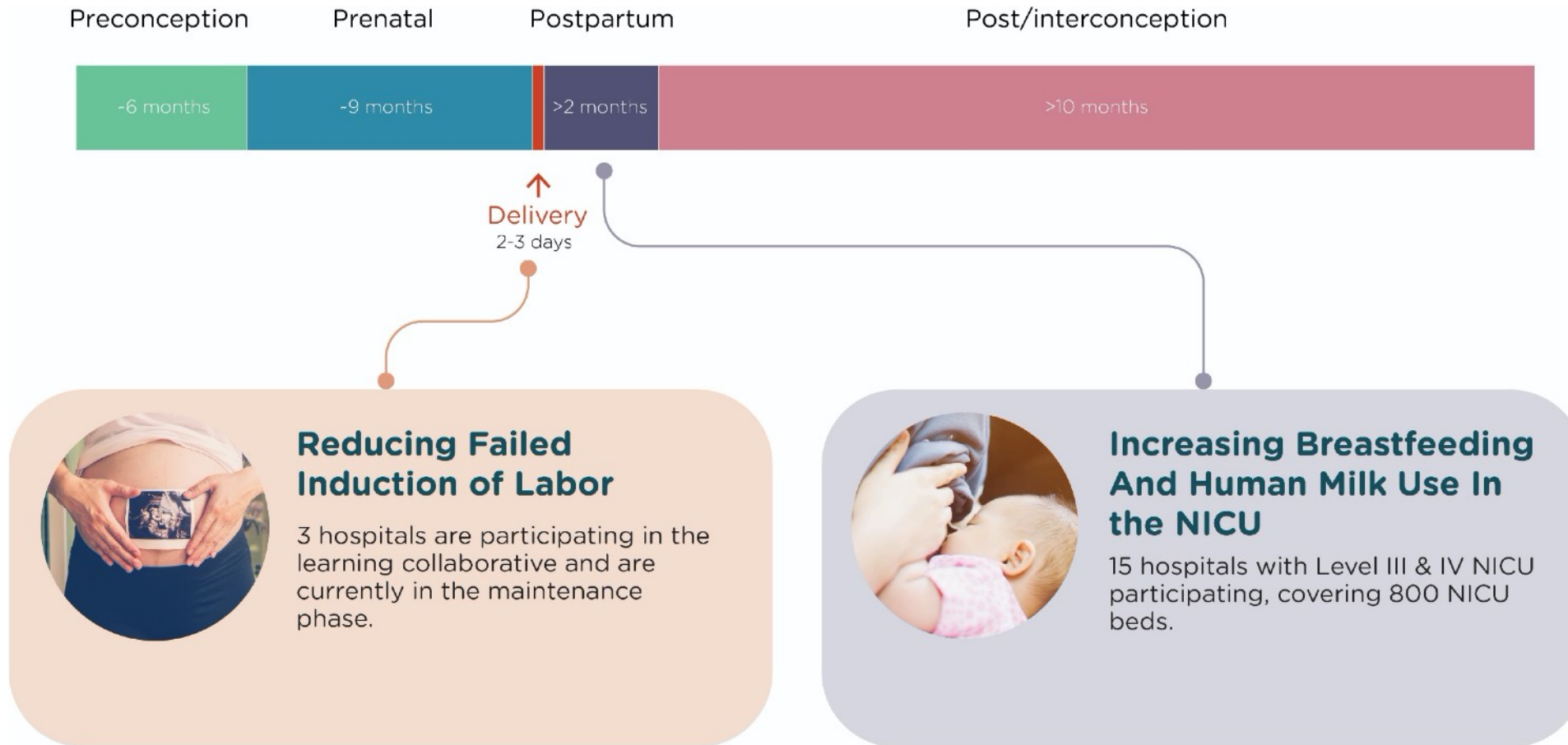


Goals

- Reducing preterm birth and infant mortality
- Reducing disparities in the
- Reducing maternal mortality and severe maternal morbidity
- Reducing disparities in the health outcomes of mothers and babies
- Improving the health outcomes of mothers and babies
- Increasing the involvement of fathers / families
- Improving women's health throughout the life cycle



TCHMB Past Initiatives



TCHMB Current and Planned Initiatives

Preconception

Prenatal

Early Postpartum

Postpartum/Interconception

6 months

9 months

0-2 months

>2 months

Delivery
2-3 days



Maternal Early Warning System

Implement a protocol into practice to facilitate timely recognition, diagnosis, and treatment for pregnant women developing critical illness, thus preventing major morbidity and mortality. This initiative is an integral component of TexasAIM.



Postpartum Access To Healthcare (PATH)

Improve access to care during the critical postpartum period, and document the experiences of underserved women in central Texas. Document the landscape, the gaps, and the opportunities for increasing accessibility to doula care for underserved women in central Texas.



Mental Health Screening and Referral for Families with an Infant in the NICU

This project will focus on implementing a screening and referral system in NICUs across the state to help identify and get families into needed mental health services.



Increasing Access to Reproductive Healthcare

3 clinic systems are participating in the learning collaborative of One Key Question® protocol and are in maintenance phase.



Infant Admission Temperature Guidelines

Provide guidance for initial assessment and to support normothermia with minimal interventions for all infants at birth.

Windows of Opportunity in Maternal Health

TCHMB Peer-reviewed Publications

Salahuddin M, Mandell DJ, Lakey DL, Ramsey PS, Eppes CS, Davidson CM, Ortique CF, Patel DA. **Maternal comorbidity index and severe maternal morbidity during delivery hospitalizations in Texas, 2011-2014.** Birth. 2019;00:1–9. doi.:10.1111/birt.12465. PMID: 31659788 [Epub ahead of print].

Salahuddin M, Mandell DJ, Lakey DL, Eppes CS, Patel DA. **Maternal risk factor index and cesarean delivery among women with nulliparous, term, singleton, vertex deliveries, Texas, 2015.** Birth. 2019; 46: 182–192. doi: 10.1111/birt.12392. PMID: 30198160.

Salahuddin M, Davidson C, Lakey DL, Patel DA. **Characteristics associated with induction of labor and delivery route among primiparous women with term deliveries in the Listening to Mothers III study.** Journal of Women's Health. 2018; 27(5): 590–598. doi: 10.1089/iwh.2017.6598. PubMed PMID:

TCHMB Scientific Conferences

Salahuddin M, Patel DA, Ramsey PS, Davidson CM, Eppes CS. **Social determinants of health and severe maternal morbidity during delivery hospitalizations in Texas.** ePoster presentation at the American College of Obstetricians and Gynecologists (ACOG) Annual Clinical and Scientific Meeting, Seattle, WA: Apr 24-27, 2020.

Patel DA, Salahuddin M, Wagner A, Ramsey PS, Davidson CM, Eppes CS. **Implementation of a Maternal Early Warning System Quality Improvement Initiative in Texas Hospitals.** ePoster presentation at the American College of Obstetricians and Gynecologists (ACOG) Annual Clinical and Scientific Meeting, Seattle, WA: Apr 24-27, 2020.

Salahuddin M, O'Neil M, Lakey DL, Patel DA. **Severe maternal morbidity in communities across Texas.** Poster presentation at the 147th American Public

TCHMB Scientific Conferences (continued)

Salahuddin M, Mandell DJ, Lakey DL, Patel DA. **Maternal risk factor index and primary cesarean delivery among low-risk women in Texas in 2015.** ePoster presentation at the American College of Obstetricians and Gynecologists (ACOG) Annual Clinical and Scientific Meeting, Austin, TX: April 27-30, 2018. *Obstetrics & Gynecology* 2018; 131: 57S. doi: 10.1097/01.AOG.0000533038.04320.a3.

Salahuddin M, Mandell DJ, Lakey DL, Patel DA. **Prevalence of chronic and pregnancy-induced cardiovascular conditions in severe maternal morbidity in Texas.** ePoster presentation at the American College of Obstetricians and Gynecologists (ACOG) Annual Clinical and Scientific Meeting, Austin, TX: April 27-30, 2018. *Obstetrics & Gynecology* 2018; 131: 25S-26S. doi: 10.1097/01.AOG.0000532926.50473.d0.

Patel DA, Davidson C, Salahuddin M, Lakey DL. **Factors associated with induction of labor among primiparous women delivering at term in LTM III study.** ePoster presentation at the American College of Obstetricians and Gynecologists (ACOG) Annual Clinical and Scientific Meeting, San Diego, CA: May 6-9, 2017. *Obstetrics & Gynecology* 2017; 129: 119S. doi: 10.1097/01.AOG.0000514623.13999.38

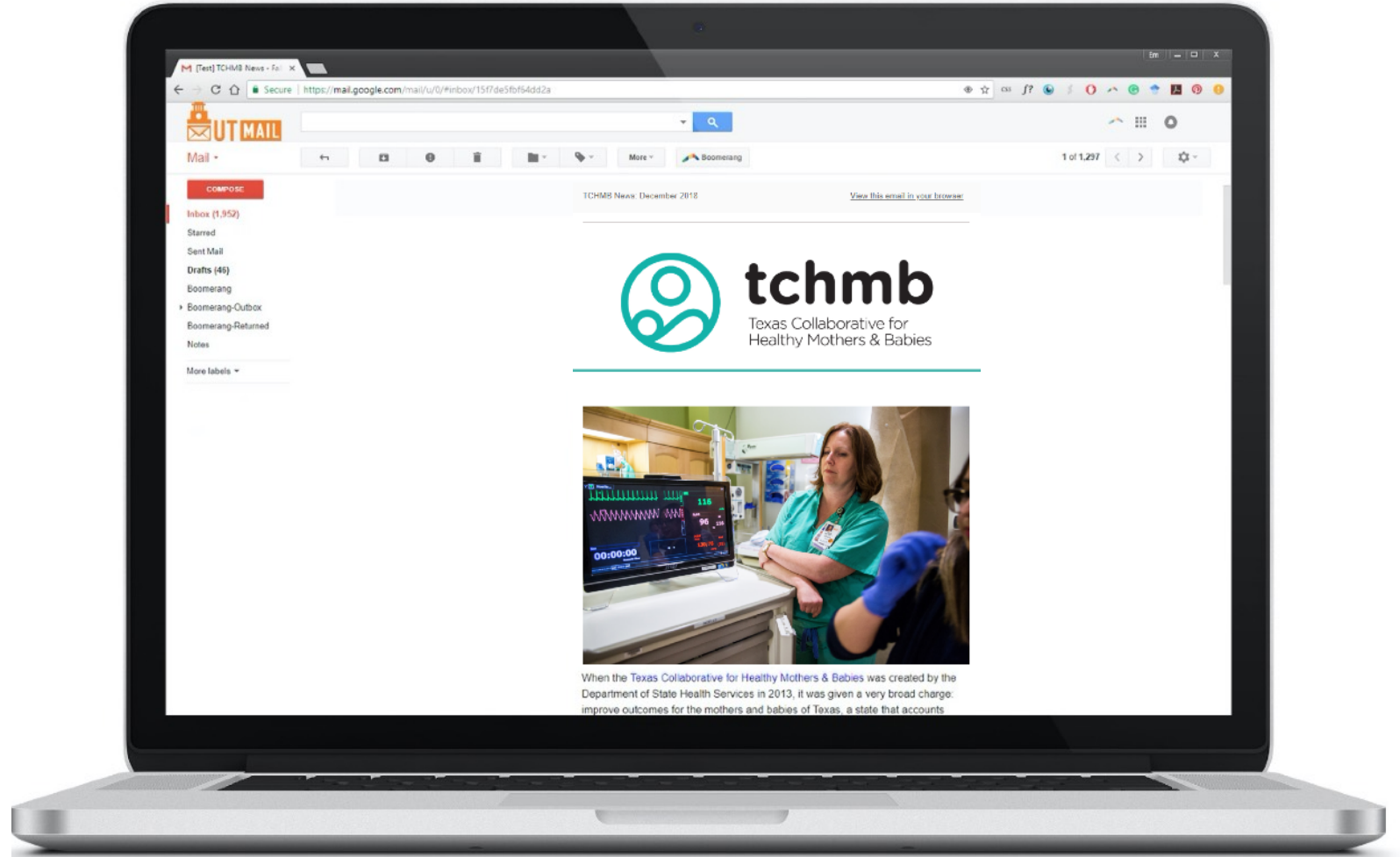
TCHMB.org

- 16,300 unique visitors in 2018



TCHMB News

- Quarterly
- 4,406 Subscribers



Goals for 2020

- Refine criteria for selecting projects to emphasize racial equity and health disparities
- Coordinate activities across OB, Neonatal, Community and Data
- Identify a real-time data infrastructure
- Increase recruitment of health professionals, patient and family members
- Increase membership and stakeholder engagement
- Utilize data, outcomes and evidence-informed and evidence-based practices to inform policy.
- Focus on reducing health disparities
- Align with shared goals of partner organizations

Thank You!



For more information on TCHMB,
visit www.tchmb.org

or email us: tchmb@utsystem.edu

