



# Alliance for Innovation on Maternal Health – Texas AIM Experience

---

**Manda Hall, MD**

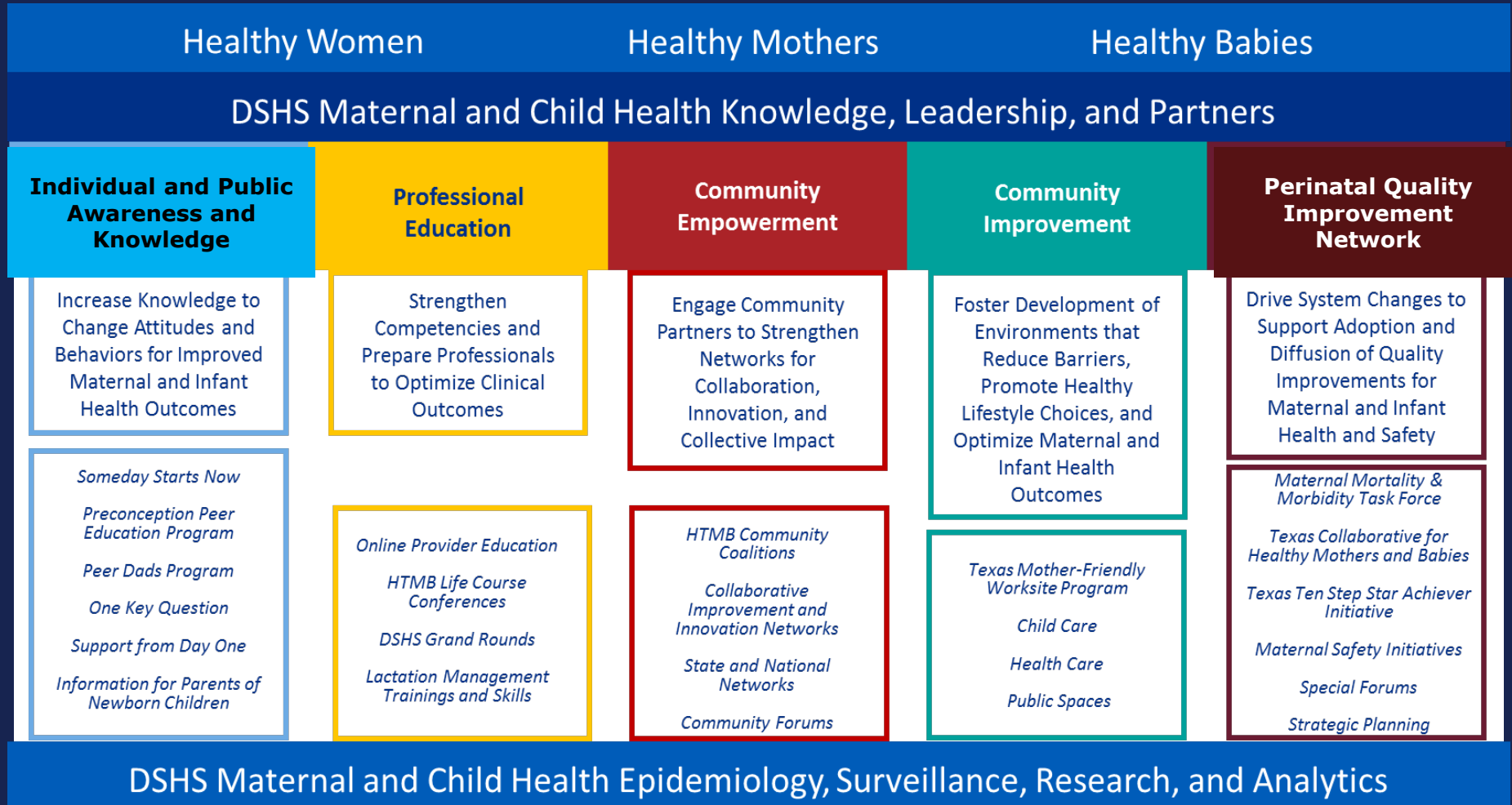
**Associate Commissioner for Community Health Improvement Division  
Texas Department of State Health Services**

**2019 Texas Collaborative for Healthy Mothers and Babies Summit  
January 29-30, 2019**



**TEXAS**  
Health and Human  
Services

# Healthy Texas Mothers and Babies



# Perinatal Quality Improvement Network

- To drive adoption and diffusion of quality improvements for maternal and infant health and safety
- Key initiatives:
  - Maternal Morbidity and Mortality Task Force
  - Texas Collaborative for Healthy Mothers and Babies
  - Risk appropriate maternal care
  - Maternal safety bundles



# Senate Bill 17

85<sup>th</sup> Legislature, 1<sup>st</sup> Special Session

---



TEXAS  
Health and Human  
Services

## Sec. 34.0156. MATERNAL HEALTH AND SAFETY INITIATIVE.

(a) Using existing resources, the department, in collaboration with the task force, shall promote and facilitate the use among health care providers in this state of maternal health and safety informational materials, including tools and procedures related to best practices in maternal health and safety.

# Reasons for *TexasAIM* Bundles

---



- Obstetric hemorrhage and eclampsia among leading causes of preventable severe maternal morbidity in Texas
- Evidence from California and other AIM states shows that AIM bundles work to reduce severe maternal morbidity
- Drug overdose mainly due to opioids leading cause of maternal death in Texas



# ***TexasAIM* Maternal Safety Bundles**

- **Goal:**
  - Reduce severe maternal morbidity using evidence-based systems to enhance maternal care
- **Implementing AIM bundles for:**
  - Obstetric hemorrhage
  - Severe hypertension in pregnancy
  - Obstetric care for women with opioid use disorder



# TexasAIM Implementation Workgroup

---

- Texas Hospital Association
- Texas Medical Association
- Texas Nursing Association
- Maternal Mortality and Morbidity Task Force
- Texas Collaborative for Healthy Mothers and Babies
- Alliance for Innovation on Maternal Health Executive Team
- ACOG National and District XI Representatives
- UT System Population Health
- Other states implementing AIM Bundles



TEXAS  
Health and Human  
Services

# ***TexasAIM Participation Options***

---

- **TexasAIM Basic**
  - Quality Improvement Webinars
  - Network Opportunities
  - Technical Assistance
  - Recognition of Participation
- **TexasAIM Plus**
  - Targeted Support from Faculty
  - Coaching and Training Calls
  - Site Visits
  - Collaborative Learning
  - Peer-to-Peer Mentoring
  - Resources and Partnerships





# ***TexasAIM Plus Collaborative AIMS***

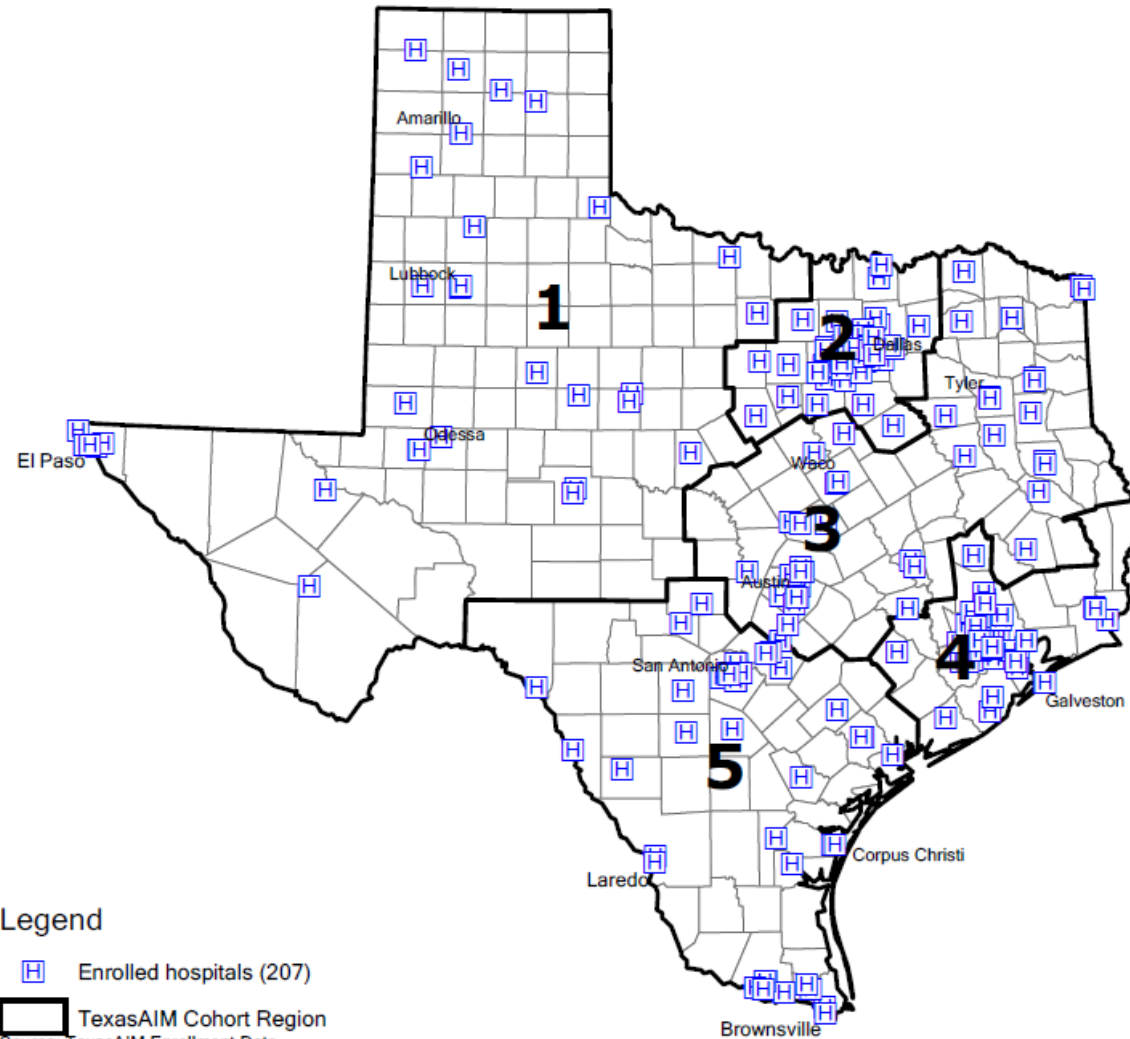
---

- Participants will develop and implement a multidisciplinary team response to very massive hemorrhage by January 1, 2020
- The proportion of severe maternal morbidity among hemorrhage patients in participating hospitals is reduced by 25% by January 1, 2020







## TexasAIM Current Hospitals as of January 23, 2019 By TexasAIM Cohort Region



### Legend

 Enrolled hospitals (207)

 TexasAIM Cohort Region

Source: TexasAIM Enrollment Data

Prepared by: Maternal & Child Health Epidemiology, 1/23/2019.



# Data Measures

---

- **Process Measures**
  - Submitted by Hospitals Quarterly
- **Structure Measures**
  - Submitted by Hospitals Quarterly (as implemented)
- **Outcome Measures**
  - Submitted by DSHS Quarterly
- **TexasAIM Plus Measures**
  - Hospitals participating in TexasAIM Plus will submit 5 extra measures monthly



# ***TexasAIM Milestones and Activities***

---

- TexasAIM Intake Assessment Workgroup
- *TexasAIM* Informational Presentations & Webinars
- *TexasAIM* Leadership Summit & Orientation
- *TexasAIM* Plus Learning Collaborative (Began in August)
  - Monthly action period calls
  - First in-person Learning Sessions held in November and December
  - Targeted technical assistance on Maternal Early Warning Signs (MEWS)





TEXAS  
Health and Human  
Services

# Thank you

---